

# ACCURACY ASSESMENT OF HIGH RESOLUTION SATELLITE IMAGES

Dr.Oktay AKSU, Dr. Mustafa ONDER, Levent ISCAN, Yk.Mh. Veysel Okan ATAK  
(General Command of Mapping, Photogrammetry Dept.)  
Dr.Onur LENK, Dr.M. Ali GURDAL (Geodesy Dept.)

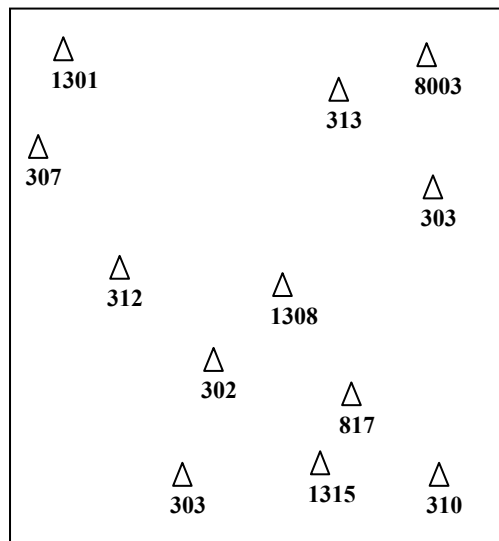
## 1. Introduction

New opportunities in photogrammetry and remote sensing applications have been initiated by launching of IKONOS in 1999 and QUICKBIRD in 2001. These high resolution satellite image are being used widely day by day in various fields for various purposes both in Turkey and abroad.

Considering the accuracy assesment for geographical information provided by those images, a test study has implemented in Turkey by General Command of Mapping (GCM) and obtained results have been given in that paper.

## 2. Project Area and Input Data

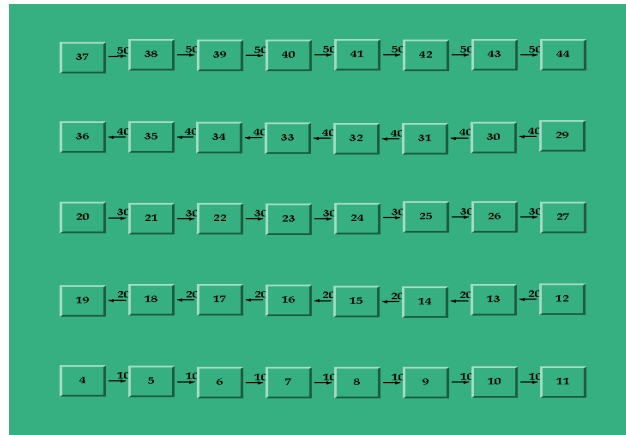
Golbası case study area near Ankara, which is 10kmx10km and already used for kinematic GPS supported aerial triangulation test project in 1996, has been selected for accuracy assesment of high resolution satellite images. 12 ground control points (in figure 1) were revised and signaled before the recording of images.



*Figure 1- Distribution of GCP's in project area*

Aerial photographs in 1:16.000 scale have also been taken by GCM on August 29<sup>th</sup>, 2002 as five strips (figure 2).

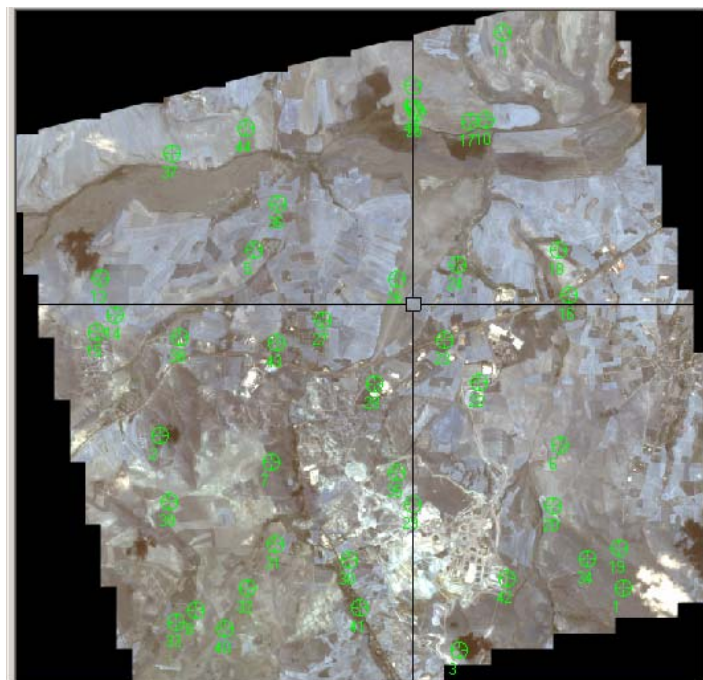
Stereo-pair IKONOS (dated August 4<sup>th</sup>, 2002) and mono QUICKBIRD (dated 26<sup>th</sup> May, 2002) images covering test area have been provided by Inta Uzay Sis.A.S (Turkey) and Eurimage (Italy) free of charge.



*Figure 2- Photogrammetric block*

### 3. Measurements

Digital Aerial triangulation measurements and combined block adjustment has been implemented by using 1:16.000 scale aerial photographs. Digital Elevation Models (DEM) in  $\pm 1\text{m}$ . accuracy have been produced by manually collected data in 20m. interval. Another DEM in  $\pm 5\text{m}$ . accuracy has also been produced by means of cartographic method from 1:25.000 scale topographic map.



*Figure 3- GCP's and check points*

Various orthophotos have been produced from aerial photograph, IKONOS and QUICKBIRD images with;

- photogrammetric DEM
- cartographic DEM
- with/without ground control points
- polynomial constants (rpc file)

Well-distributed 27 check-points such as junction of roads, field corners have been defined and planimetric coordinates were measured on all orthoimages. GPS measurements of check points and calculations of orthometric heights have also been implemented.

#### 4. Conclusions

Ground coordinates of Check Points which have  $\pm 1.5$  cm. planimetric and  $\pm 3.0$  cm. vertical accuracy are compared with orthophoto coordinates. Following table shows the overall results.

	RMSE (Root Mean Square Error) x,y meter	
	IKONOS	QUICKBIRD
7 Control Point and Photogrametric DEM	0.82 - 1.24	0.88 - 0.82
7 Control Point and Cartographic DEM	0.86 - 1.41	0.94 - 0.86
GCP's from 1:25.000 raster map and Cartographic DEM	6.79 - 6.56	5.20 - 3.50
Polynomial Constants and Cartographic DEM	12.27 - 11.06	40.55 - 15.52

*Table 1- Obtained results*

3-D coordinates of check points in stereo model of IKONOS are also compared with orthometric heights and r.m.s.e is  $\pm 1.18$ m.

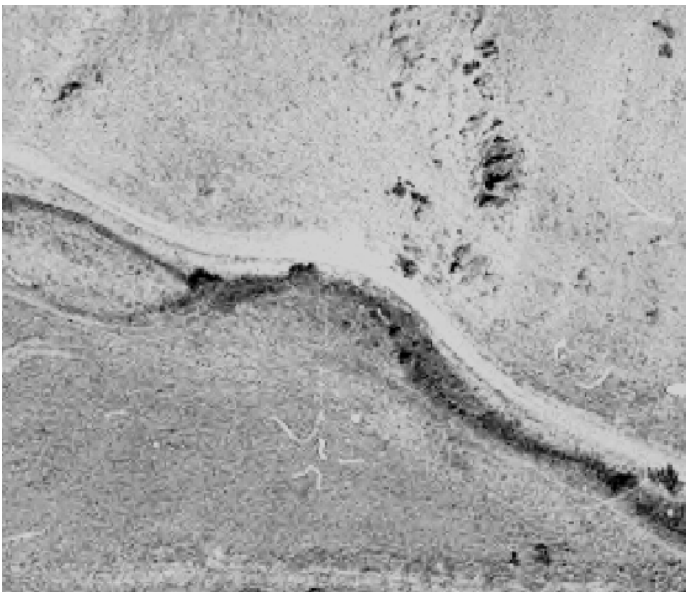
Considering the above results, following remarks can be concluded;

- DEM accuracy between 1-5m is enough to get eligible results.
- High resolution satellite images can provide 1:2500 and smaller scale orthophoto production when only the image quality is considered, but are eligible for 1:10.000 and smaller scale topographical mapping when the geometrical accuracy is considered (0.5m. geometrical accuracy is needed for 1:5.000 scale cadastral mapping in Turkey, according to the existing specifications).
- Although the better resolution and image sharpness of Quickbird image (figure 4), polynomial constants in May 2002 need to revising.
- Optimum output scale of orthophotos can be seen in figure 5.



*(a) Orthophoto from IKONOS (1:1,000)*

*(b) Orthophoto from QUICKBIRD (1:1,000)*



*Figure 4-(c) Orthophoto from aerial photographs (1:1,000)*



*(a) Orthophoto from 1:16.000 aerial photograph (1:1.000)*



*Figure 5-(b) Orthophoto from IKONOS (1:3.000)*



*(c) Orthophoto from QUICKBIRD (1:1750)*

## **Acknowledgments**

Thanks to Ms.Donatella Giampaolo (Eurimage-Italy) and Mr.Murat Erciyes (Inta Uzay Sis.A.S.-Turkey) for their reasonable contributions to that study.